

Sound absorption specifications for ALIPOL

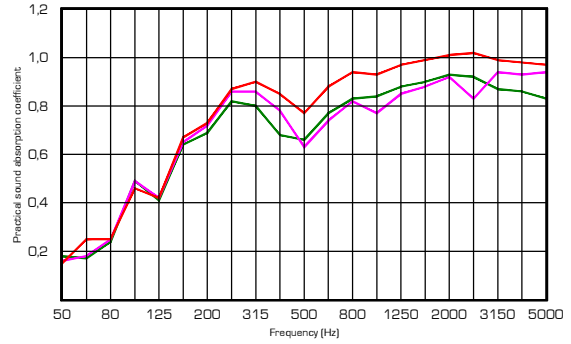
ALIPOL is made of PET - 100% recyclable.

Alipol generates no dust or unhealthy fibres when touched or handled which makes our sound absorption products perfect for schools and public spaces.
Manufactured in Sweden.

Test performed on material mounting height 400mm.

Test performed according to SS - EN ISO 354.

Classification according to SS - EN ISO 11654.



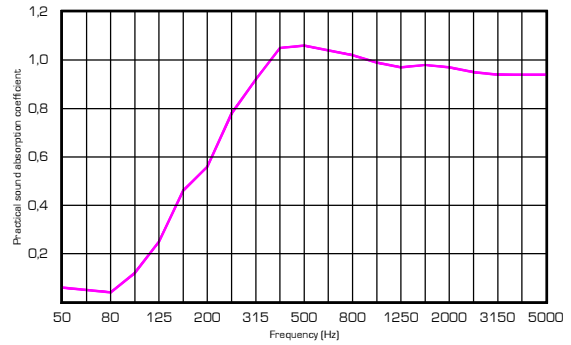
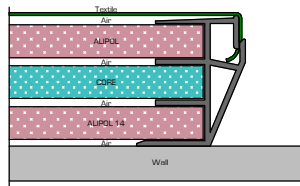
█	Double ALIPOL	2 x 14 mm	3,50 kg / m ²	Sound absorption coefficient $\alpha_w = 1,0$	Sound absorption class A
█	Single ALIPOL	1 x 14 mm	1,75 kg / m ²	Sound absorption coefficient $\alpha_w = 0,8$	Sound absorption class B
█	Mineral or glass wool	1 x 15 mm	2,50 kg / m ²	Sound absorption coefficient $\alpha_w = 0,8$	Sound absorption class B

Sound absorption specifications for standard panels

Absorption panel "QS - 3"

Sound absorption class A

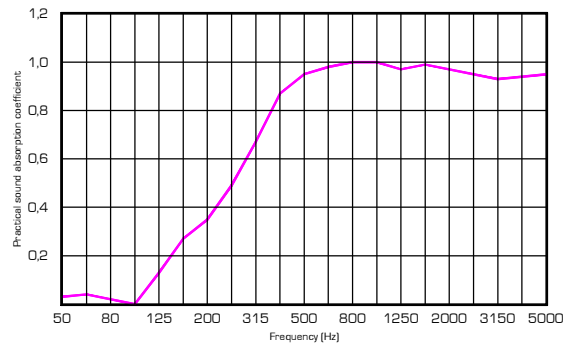
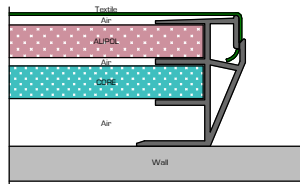
Sound absorption coefficient $\alpha_w = 1,0$



Absorption panel "QS - 2"

Sound absorption class B

Sound absorption coefficient $\alpha_w = 0,8$



Absorption panel "QS - DOUBLE CORE"

Sound absorption class C

Sound absorption coefficient $\alpha_w = 0,75$

